

How to setup a wireless connection (802.11b) from PalaisKraft guestrooms to the Public Internet

Note: In this particular, case we are using Windows XP Professional and the Intel®PROSet Wireless adapter.

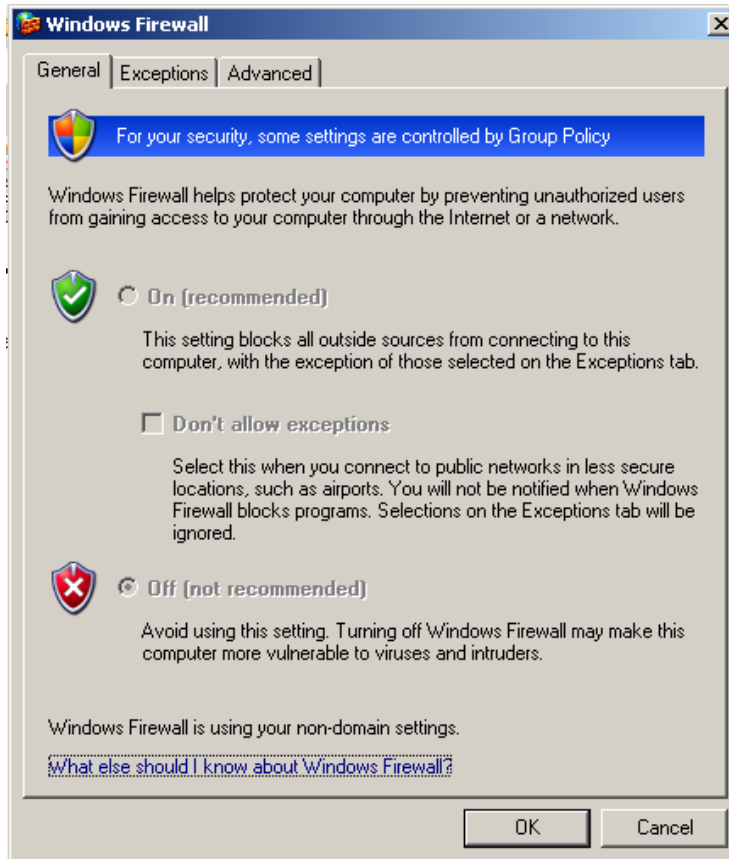
Depending on your operating system, computer, and hardware the following settings may be different. Nevertheless, the principles are the same.

Step-by-Step

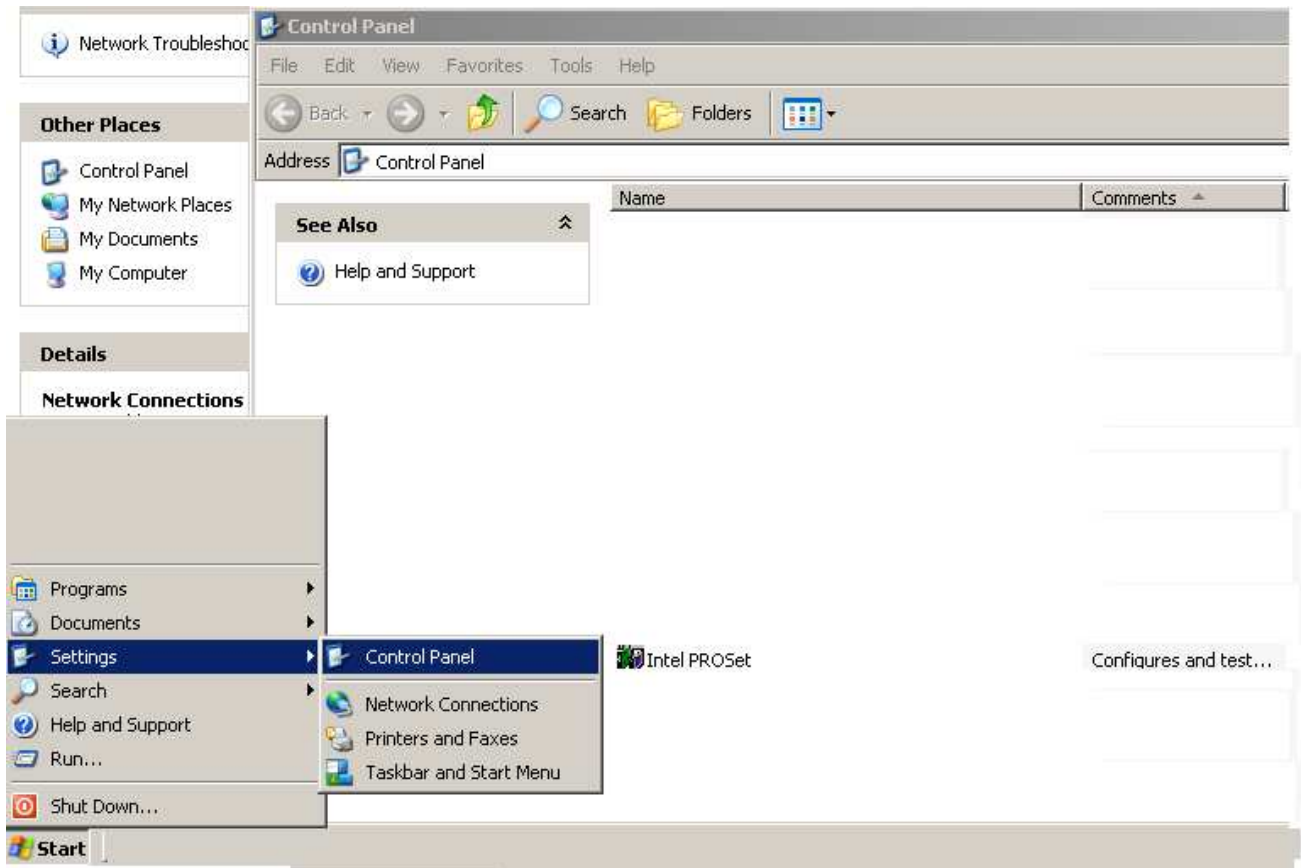
1. Ensure the physical connection (Ethernet cable) to the Wireless device is properly connected.



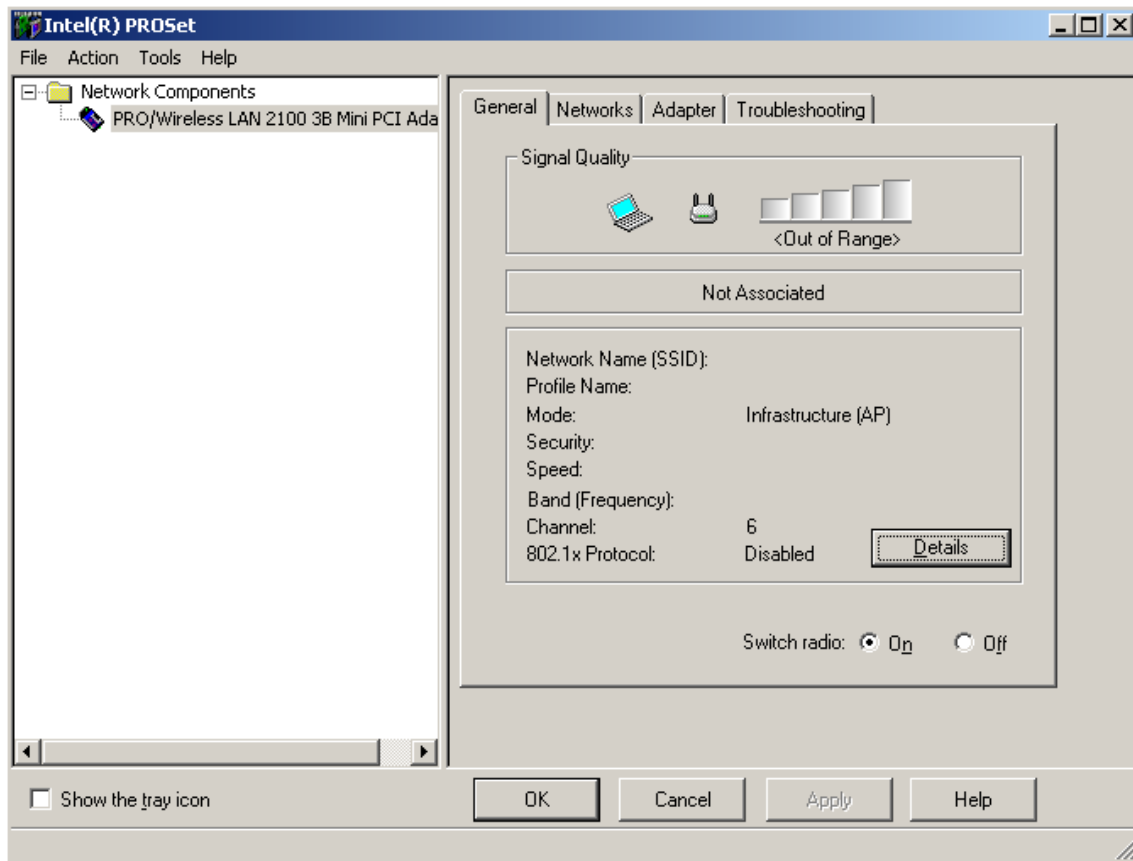
2. Disable Windows firewall or any private firewall settings you may have. (Start -> Settings -> Control Panel), and select Network Connections -> Change Windows Firewall settings.



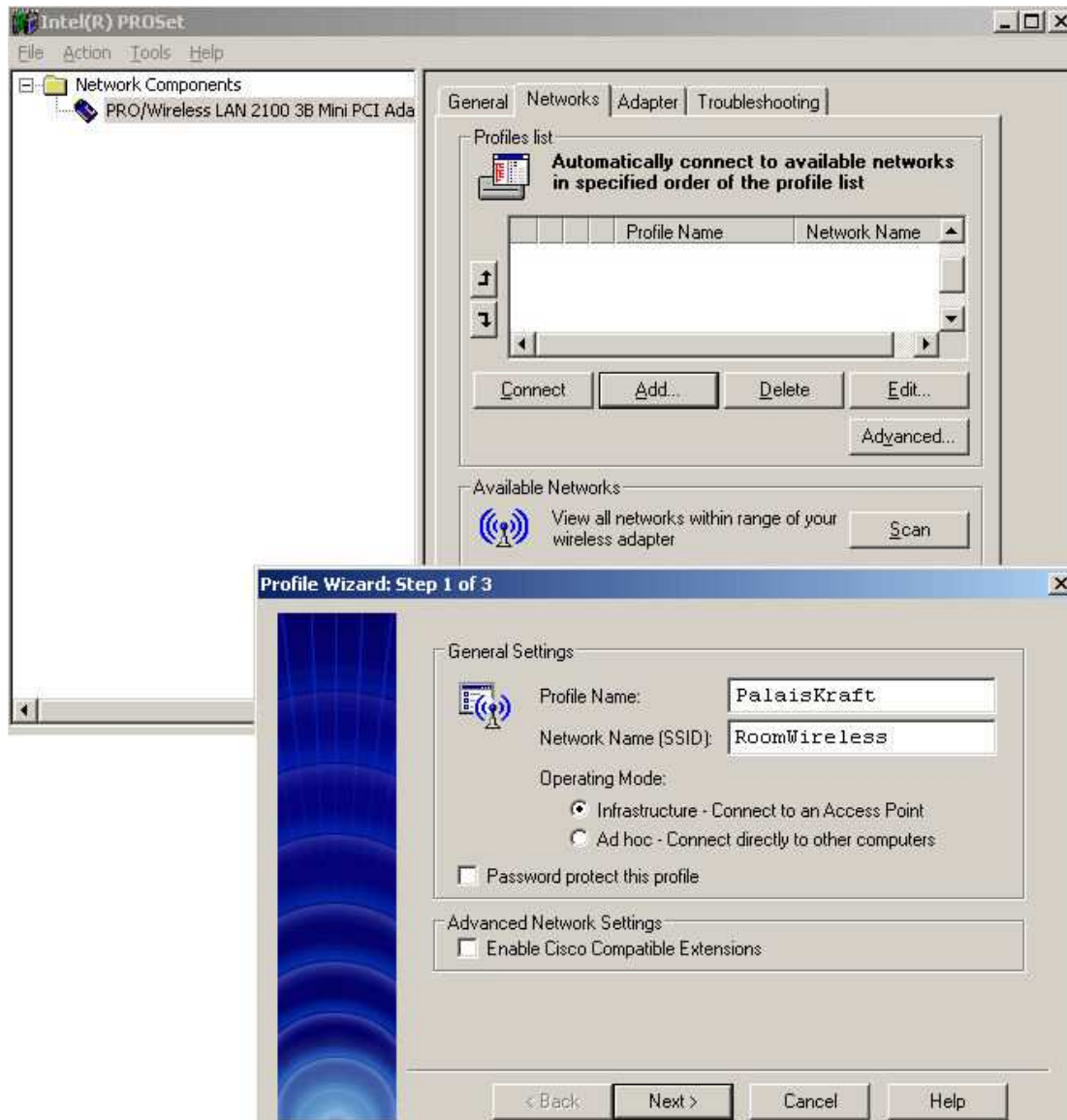
3. Open the Wireless Adapter settings. (Start -> Settings -> Control Panel), and select Intel®PROSet.



4. Ensure the Wireless connection (Switch radio:) is ON and click the Networks tab.



5. Add a new Profile Name as listed below, and click Next.



6. Configure the security settings as listed below:

Note: The Pass phrase is case sensitive.

Profile Wizard: Step 2 of 3

Security Settings

Network Authentication: Shared

Data Encryption: WEP

Authentication/Encryption Key Settings

Set Manual Key

Key index: 1

Encryption Level: 128-bit

Use pass phrase (13 character values required)

Use hex Key (26 hexadecimal values required)

Pass phrase:

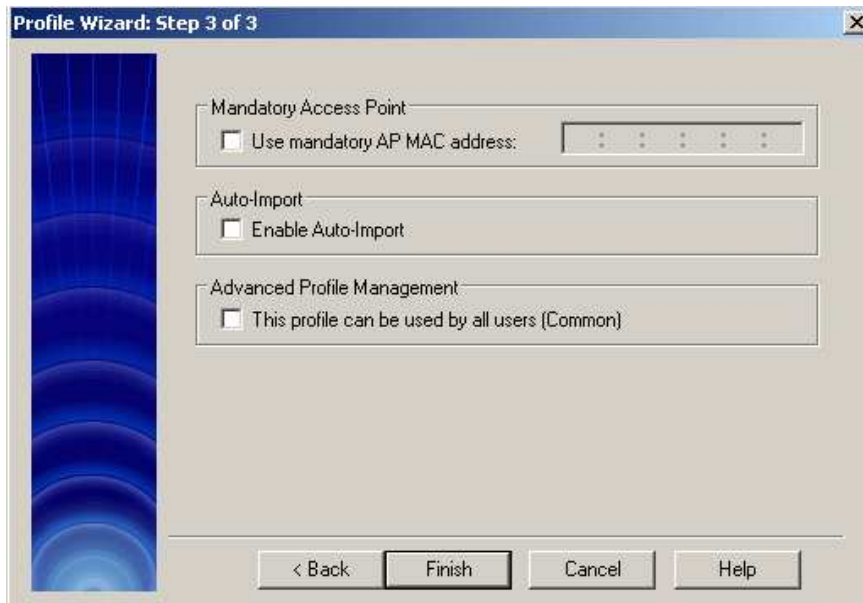
802.1x Settings

802.1x Enabled

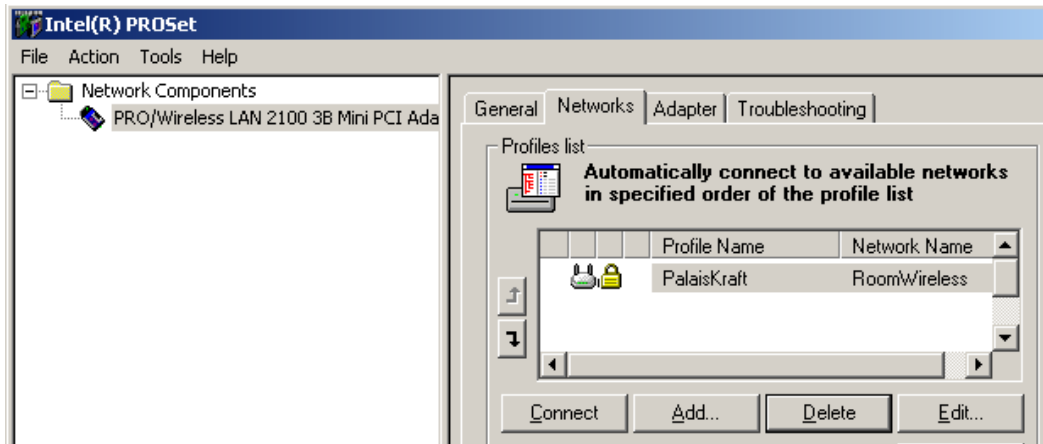
Authentication Type: TLS Configure >>

< Back Next > Cancel Help

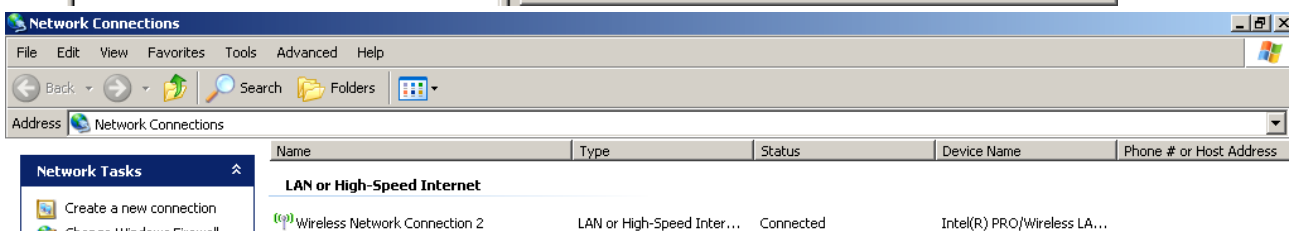
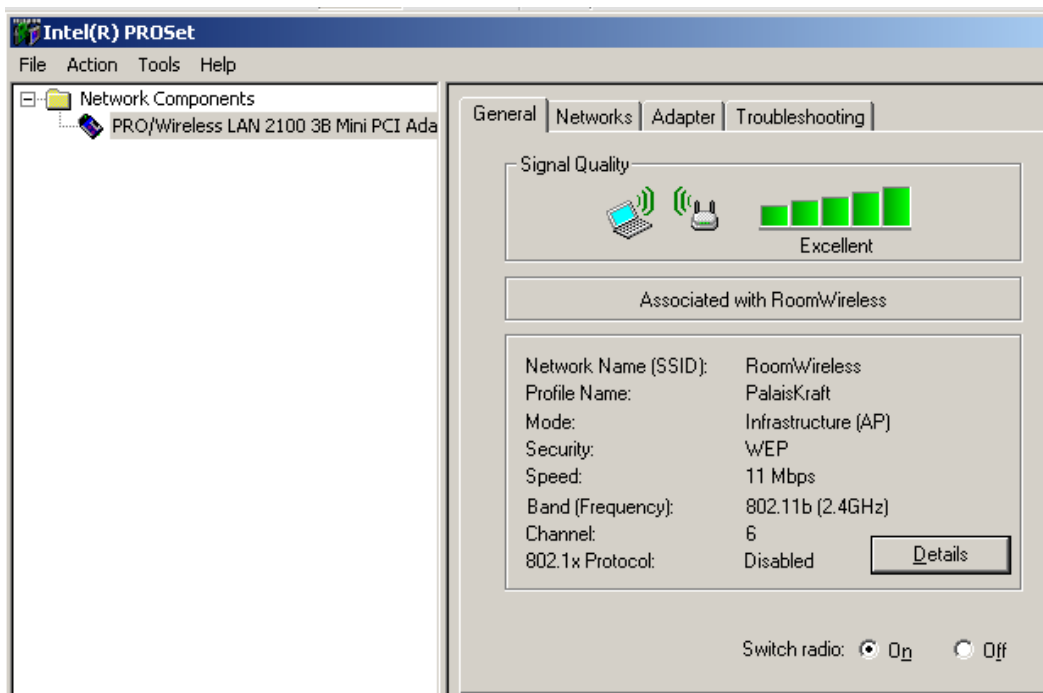
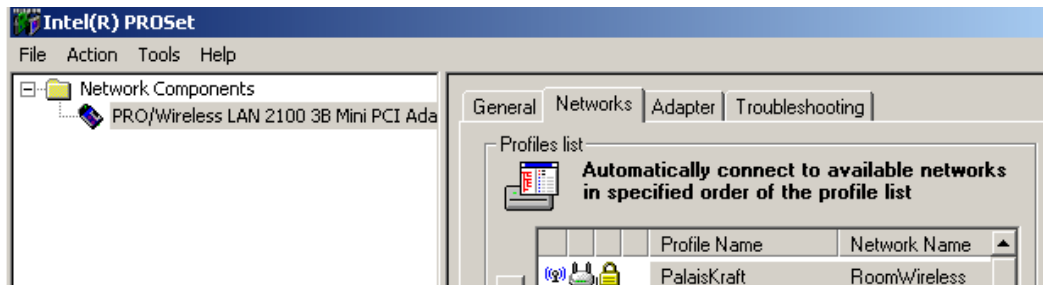
7. Click Finish



8. Connect to the Wireless network



If connected properly, the connection status icon will change as listed below.

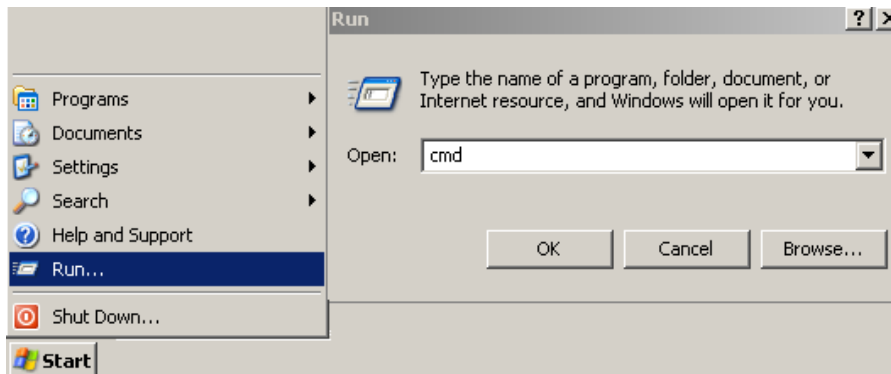


9. Test your connecting by opening a web browser and type

<http://www.google.com>

If you are having difficulties:

1. Restart your computer.
2. Open a Command prompt window (Start -> Run -> cmd)



3. To see your current network connections, type ipconfig / all

```

C:\WINNT\system32\cmd.exe
C:\>
C:\>ipconfig /all

Windows IP Configuration

    Host Name . . . . . :
    Primary Dns Suffix . . . . . :
    Node Type . . . . . : Peer-Peer
    IP Routing Enabled. . . . . : No
    WINS Proxy Enabled. . . . . : No
    DNS Suffix Search List. . . . . :

Ethernet adapter Wireless Network Connection 2:

    Connection-specific DNS Suffix . . :
    Description . . . . . : Intel(R) PRO/Wireless LAN 2100 3B Mini PCI Adapter
    Physical Address. . . . . :
    Dhcp Enabled. . . . . : Yes
    Autoconfiguration Enabled . . . . . : Yes
    IP Address. . . . . : 192.168.111.55
    Subnet Mask . . . . . : 255.255.255.0
    Default Gateway . . . . . : 192.168.111.1
    DHCP Server . . . . . : 192.168.111.1
    DNS Servers . . . . . : 195.186.1.111
    . . . . . : 195.186.4.111
    Lease Obtained. . . . . : 28 April 2007 21:32:46
    Lease Expires . . . . . : 01 May 2007 21:32:46

Ethernet adapter Local Area Connection 4:

    Media State . . . . . : Media disconnected
    Description . . . . . : Intel(R) PRO/1000 MT Mobile Connection
    Physical Address. . . . . :

Ethernet adapter < >:

    Media State . . . . . : Media disconnected
    Description . . . . . :
    For SecureClient - SecuRemote Miniport
    Physical Address. . . . . :

C:\>ipconfig /release

Windows IP Configuration

No operation can be performed on Local Area Connection 4 while it has its media disconnected.
No operation can be performed on while it has its media disconnected.

Ethernet adapter Wireless Network Connection 2:

    Connection-specific DNS Suffix . . :
    IP Address . . . . . : 0.0.0.0
    Subnet Mask . . . . . : 0.0.0.0
    Default Gateway . . . . . :

Ethernet adapter Local Area Connection 4:

    Media State . . . . . : Media disconnected

Ethernet adapter < >:

    Media State . . . . . : Media disconnected

C:\>ipconfig /renew

Windows IP Configuration

No operation can be performed on Local Area Connection 4 while it has its media disconnected.
No operation can be performed on while it has its media disconnected.

Ethernet adapter Wireless Network Connection 2:

    Connection-specific DNS Suffix . . :
    IP Address . . . . . : 192.168.111.55
    Subnet Mask . . . . . : 255.255.255.0
    Default Gateway . . . . . : 192.168.111.1

Ethernet adapter Local Area Connection 4:

    Media State . . . . . : Media disconnected

Ethernet adapter < >:

    Media State . . . . . : Media disconnected

C:\>

```

4. To release the IP address bound to your Wireless Network Connection,
type `ipconfig / release`
5. To renew and bind an IP address to your Wireless Network Connection,
type `ipconfig / renew`
6. For more troubleshooting options:
type `ipconfig /h`

Other DOS networking command tips:

ping /h
ping 195.186.1.111
nslookup
netstat /h
net view /h

Note: If you receive an IP address listed in the output of ipconfig, but no connection to the public Internet via <http://www.google.com>, the connection from PalaisKraft is working properly and you may have a problem with a conflicting service or port on your local computer.

Help

Contact the people responsible for setting-up your computer for further troubleshooting tips. In you require additional assistance, please call:

Entec +41 800 80 00 (installation in the building). Entec's helpful Mr. Rück +41 79 427 77 32. Please inform him if you have a company VPN.

Cablecom +41 800 888 450 (Internet service provider).

We recommend Entec for all your network and Internet needs.